

# Data Update

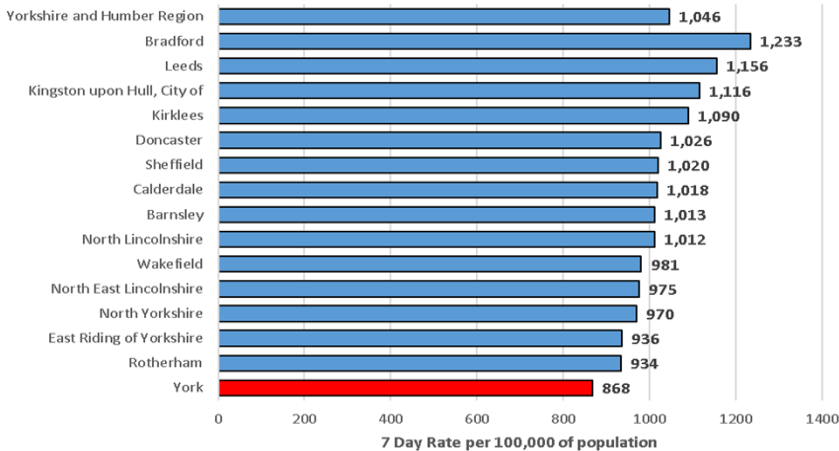
26<sup>th</sup> January 2022



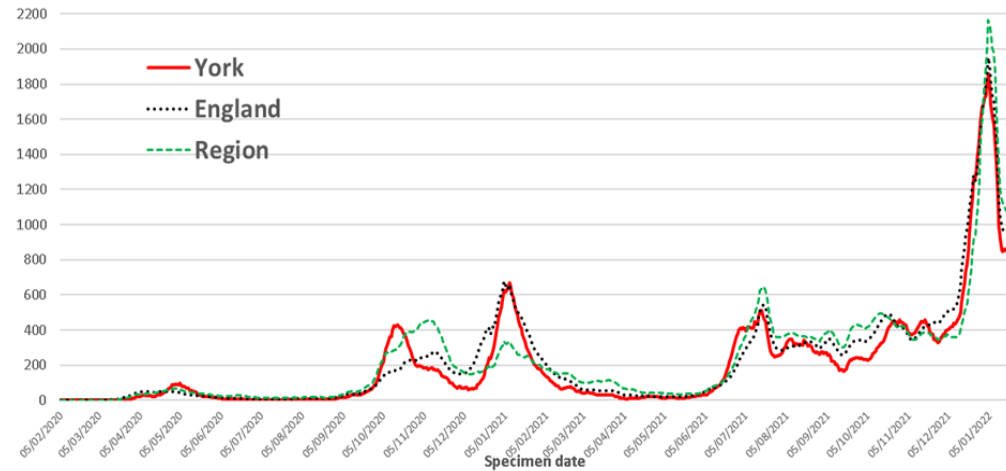
# Position in Region

# Epidemic Curve

Covid 7 day rate per 100,000: Yorkshire & Humber Region

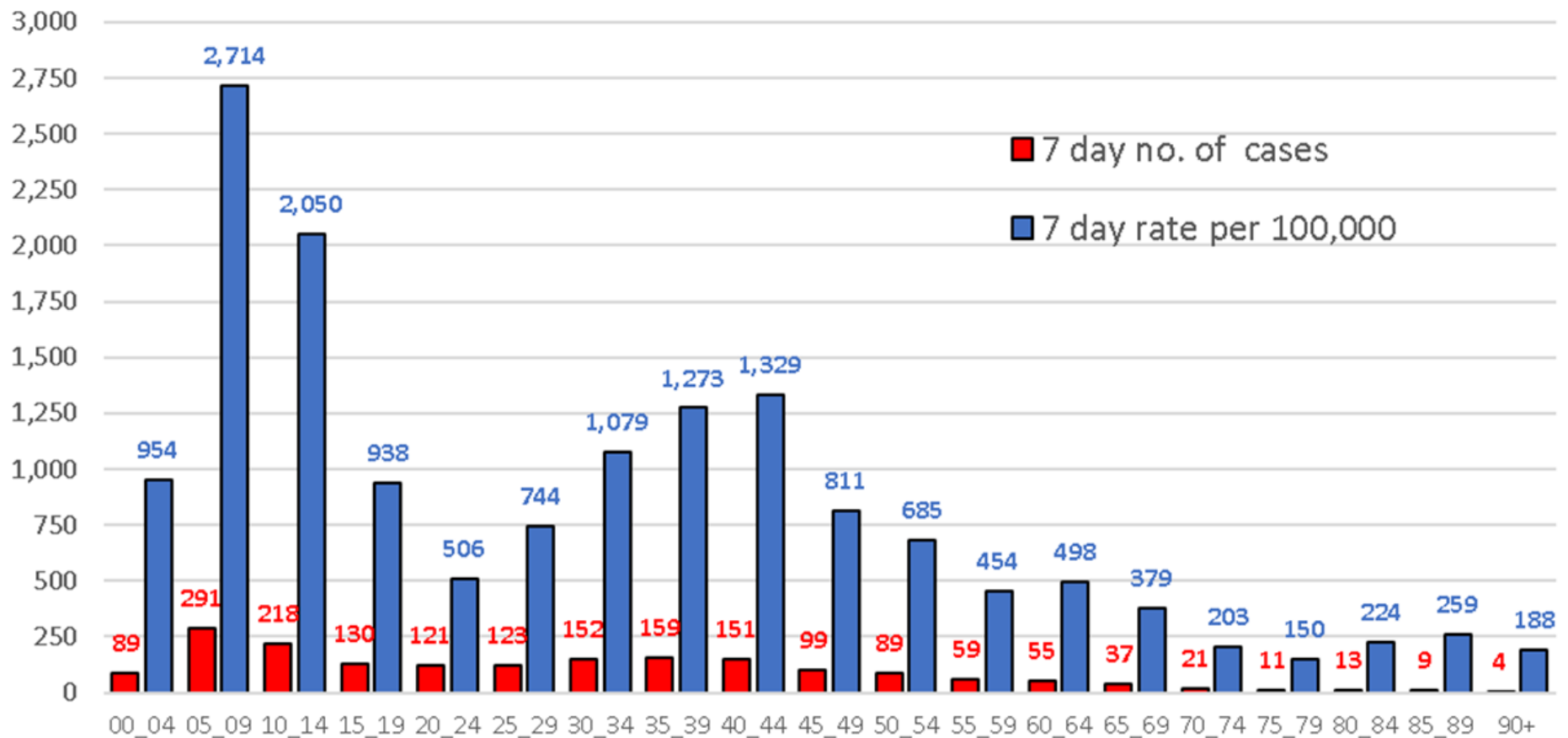


New cases in last 7 days per 100,000 of population - York

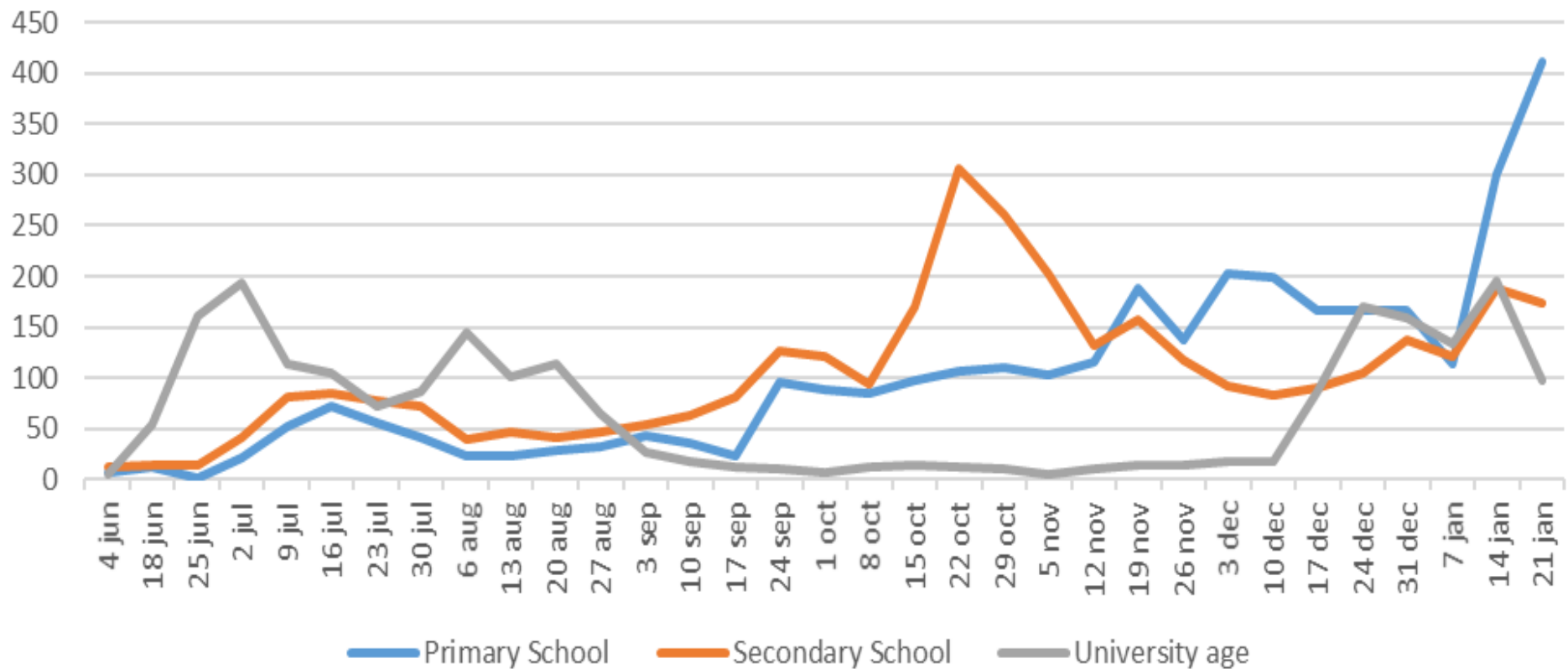


The latest official “validated” rate of new Covid cases per 100,000 of population for the period 14.1.22 to 20.1.22 in York was **868.2** (1,832 cases). The national and regional averages at this date were **988.9** and **1,045.8** respectively (using data published on Gov.uk on 25.1.22).

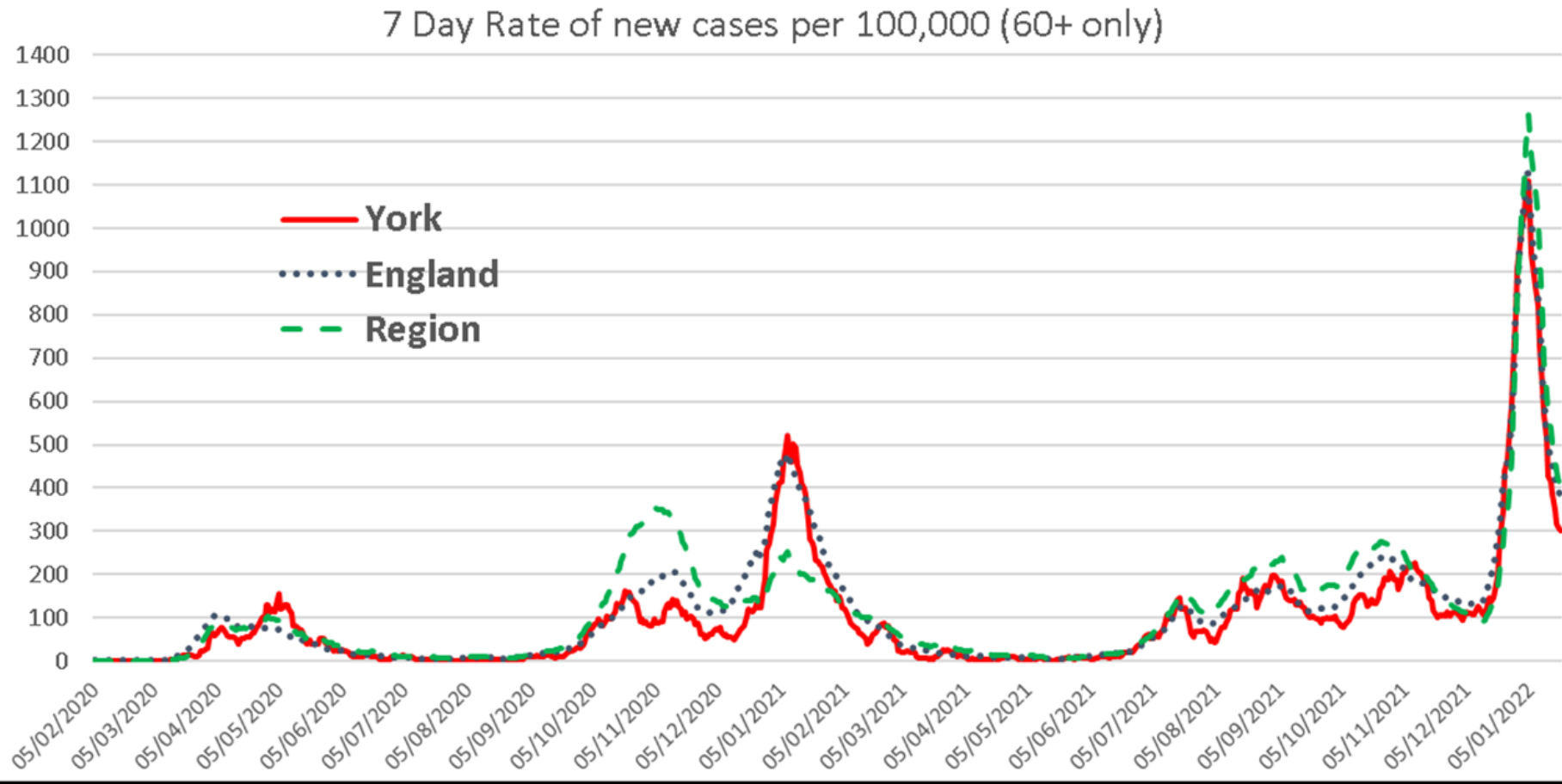
Cases in the last 7 days per 100,000 by 5 year age band in York



## Cases in students



The rate of new Covid cases per 100,000 of population for the period 14.1.22 to 20.1.22 for people aged **60+** in York was **300.5** (150 cases). The national and regional averages were 382.6 and 405.1 respectively.



# Care homes and Schools

- **Cases in Residential Care Settings**

- As at 21.1.22 there were **18** care homes in the CYC area with confirmed Covid-19 infection (at least 1 case of either a staff member or resident).
- The latest 'outbreak' (2+ cases of either a staff member or resident) in a residential care setting in York was reported by PHE on **26.1.22** (1 home).

- **Cases amongst School Aged Children**

- In the 7 days up to 24.1.22 there were **627** children of primary or secondary school age who tested positive across **59** schools.
- (The time period relates to the dates when the positive cases were uploaded onto the local database from the DPH line listing rather than test specimen date).

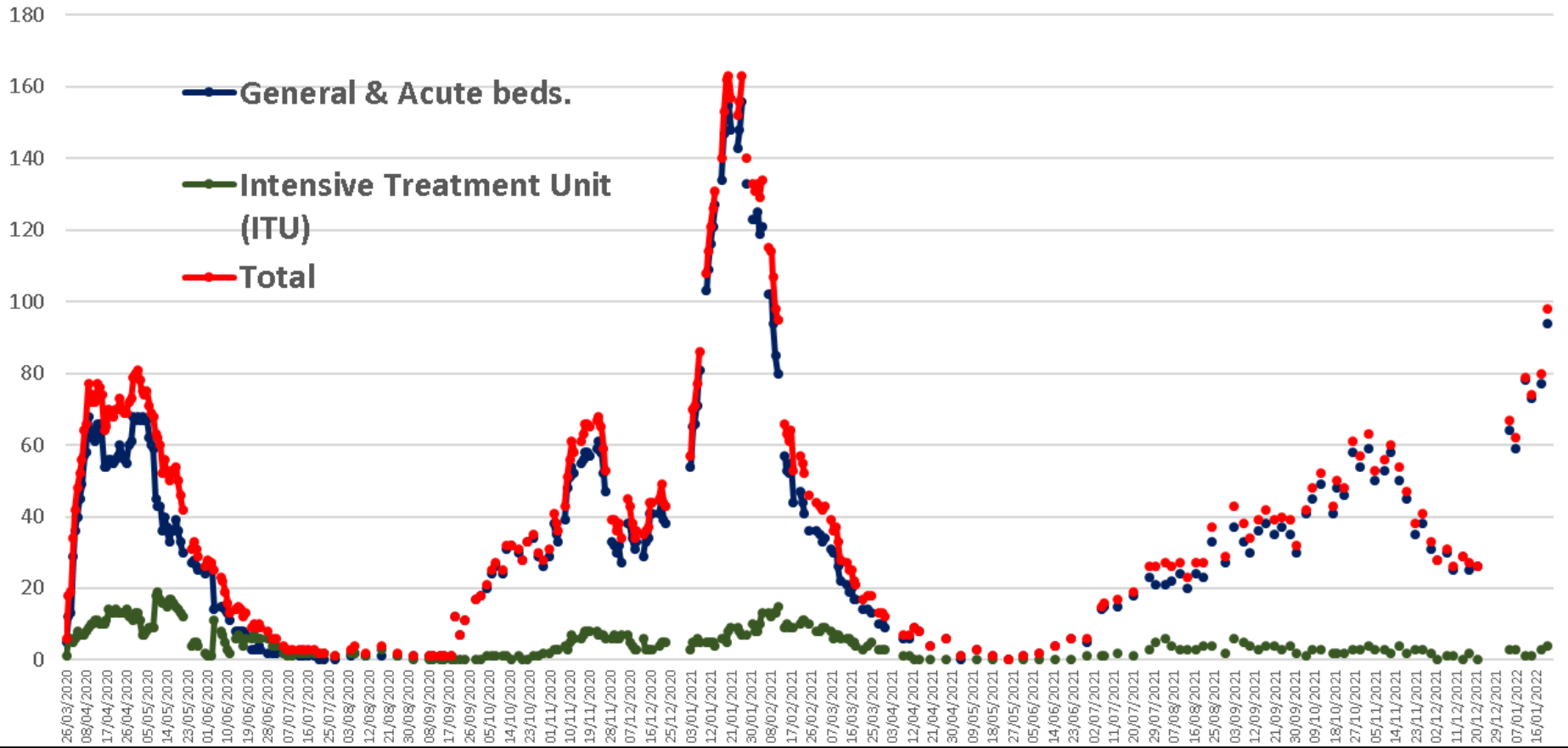
# Variant Summary

In the latest month for which data is available in York (cases with a specimen date between 23<sup>rd</sup> December 2021 and 22<sup>nd</sup> January 2022) the estimated percentage breakdown by Variant of Concern (VOC) or Variant under Investigation (VUI) is as follows:

- VOC-21APR-02 (Lineage B.1.617.2 - Delta /India): **0.21%** of cases
- VUI-21OCT-01 (Lineage A.Y 4.2 - Delta 'Plus'): **0.13%** of cases
- VOC-21NOV-01 (Lineage B.1.1.529 - Omicron): **99.66%** of cases

As at 21.1.22 there were **94** people with Covid in a General / Acute bed and **4** in ITU.

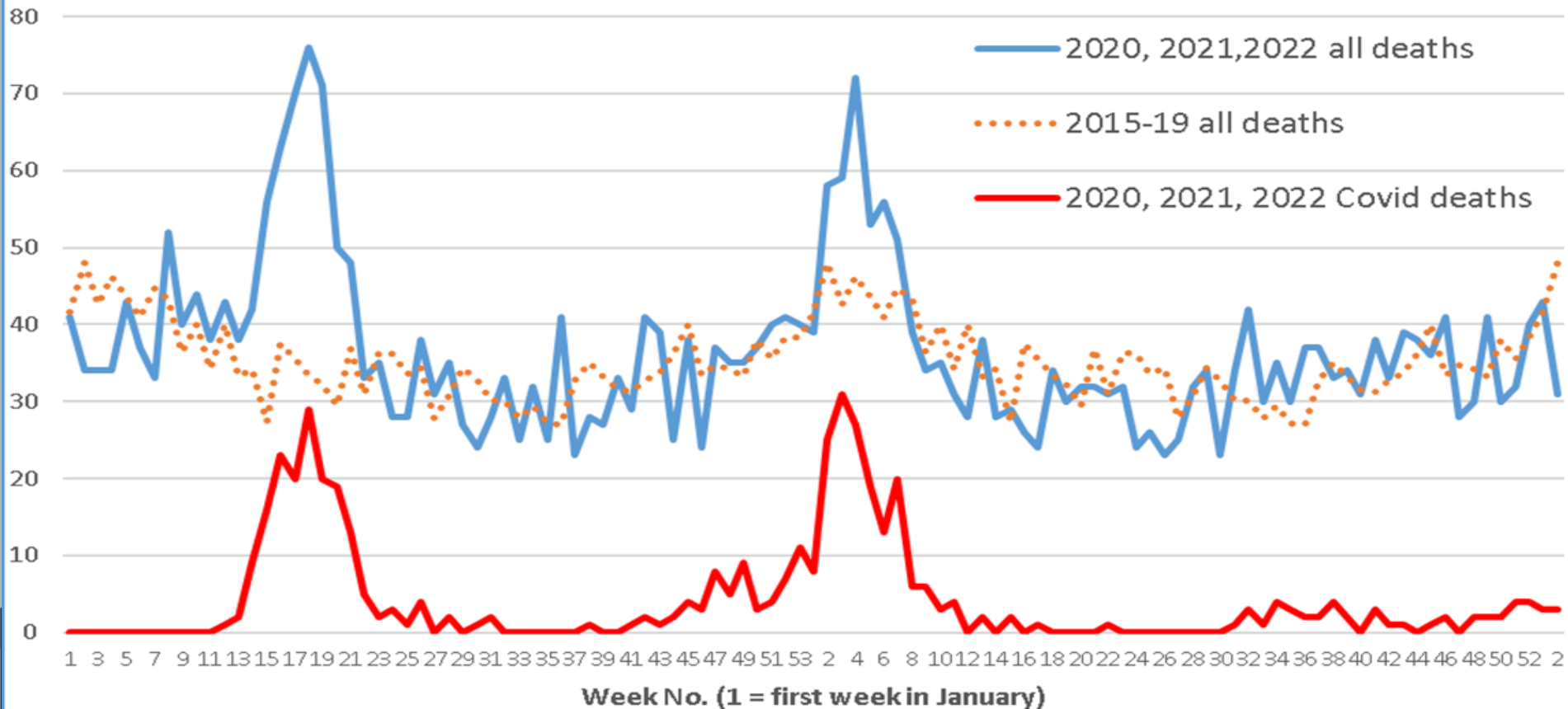
Confirmed Covid 19 patients in Beds at York Hospital





There have been **165** 'excess deaths' in York since the start of the 2020 (using the 2015-2019 weekly average number of deaths as the comparator)

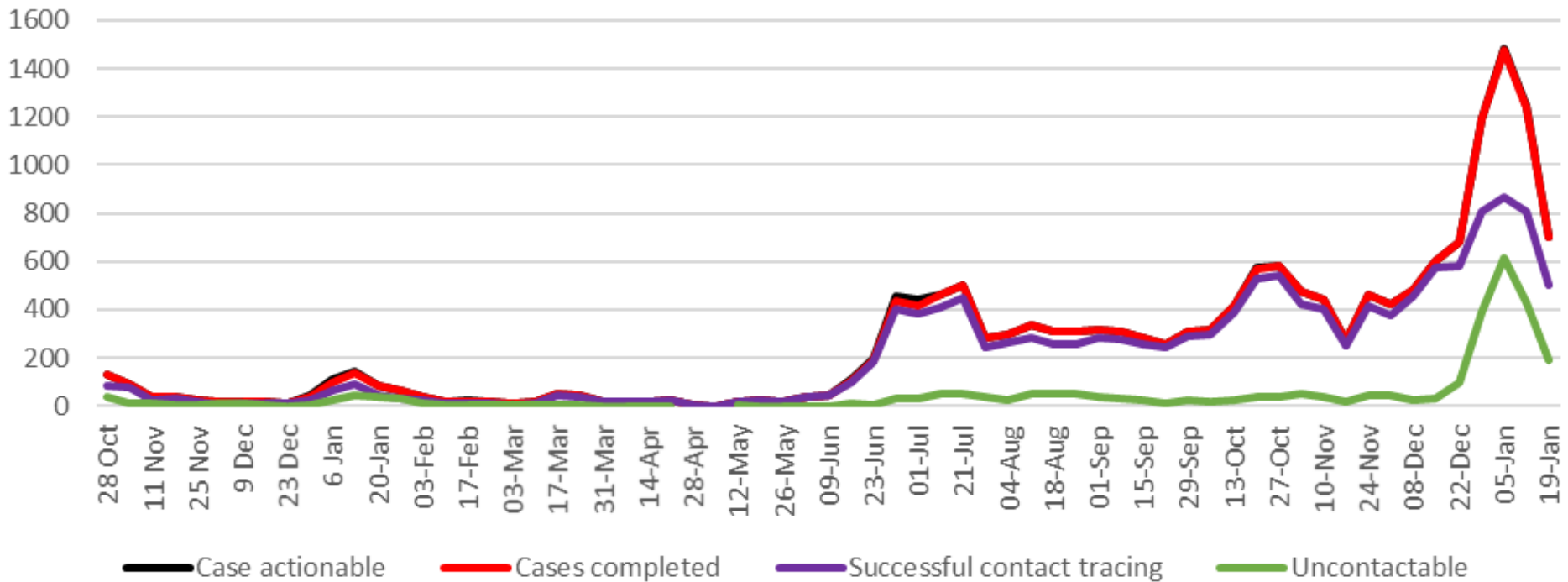
**Weekly deaths (all causes) ONS**  
2020 & 2021 deaths v 2015-19 weekly average



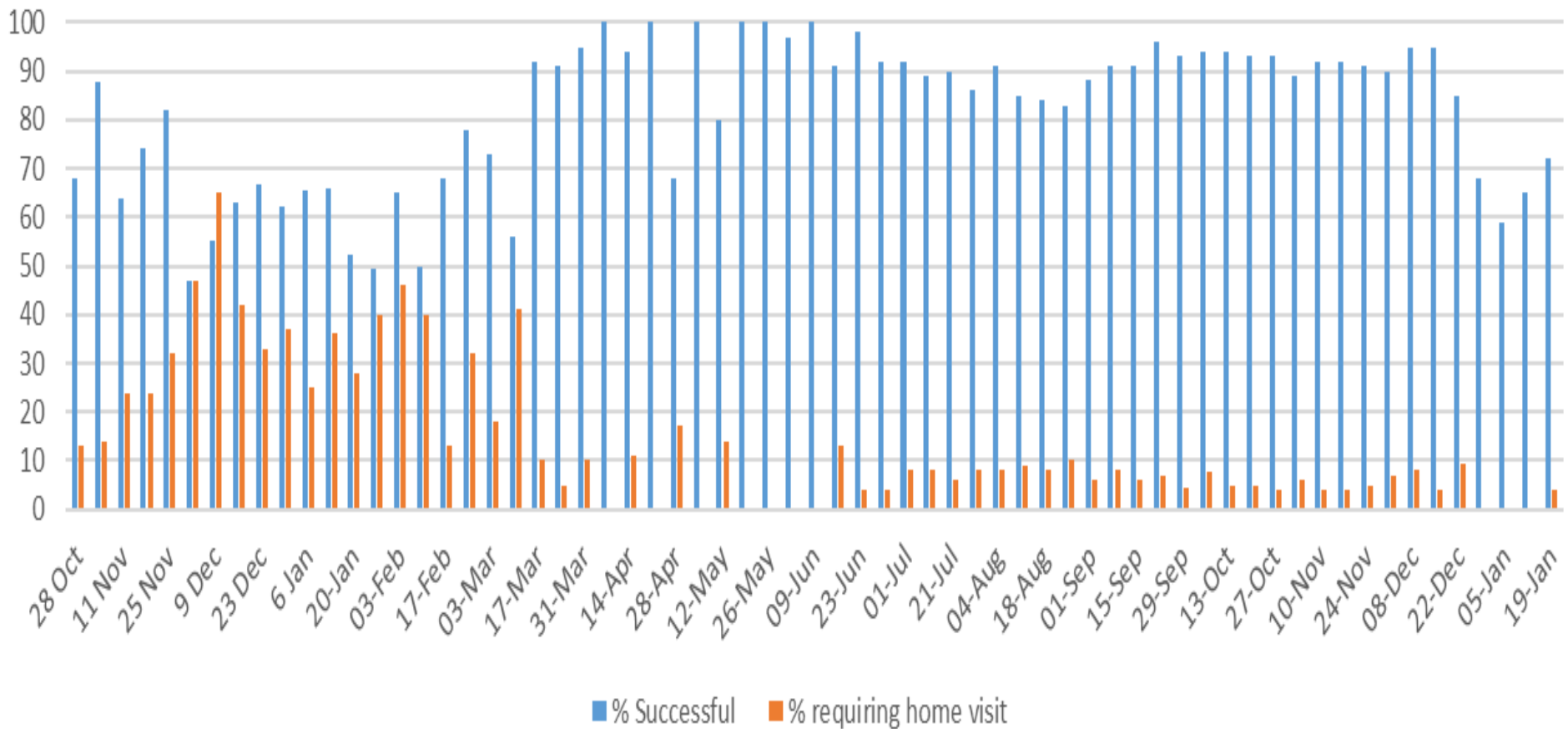
The substantial rise in cases over December led to an inevitable drop in successful contacts by our local team



### Local Contact Tracing Numbers



## Local Contact Tracing



# The number of lateral flow tests being registered over December tripled

LFT Testing - York Residents

